

ETM-G01 E (MG)

Quick Start Guide

eTouch Medical Inc.

ETM-G01E (MG) Quick Start Guide

eTouch Medical Inc.

This Device (ETM-G01E) is measuring your body damping to compare with big data collected to come out the blood glucose algorithm value without using fingersticks. Instead of conventional finger pricking test method requiring blood sample, our machine demand you to preselect “**mode**” and “**body status**”, then the machine has initial value to do algorithm with the measurement to give blood glucose result. Please visit our site for technology white paper:

<https://etouchmedical.com/>

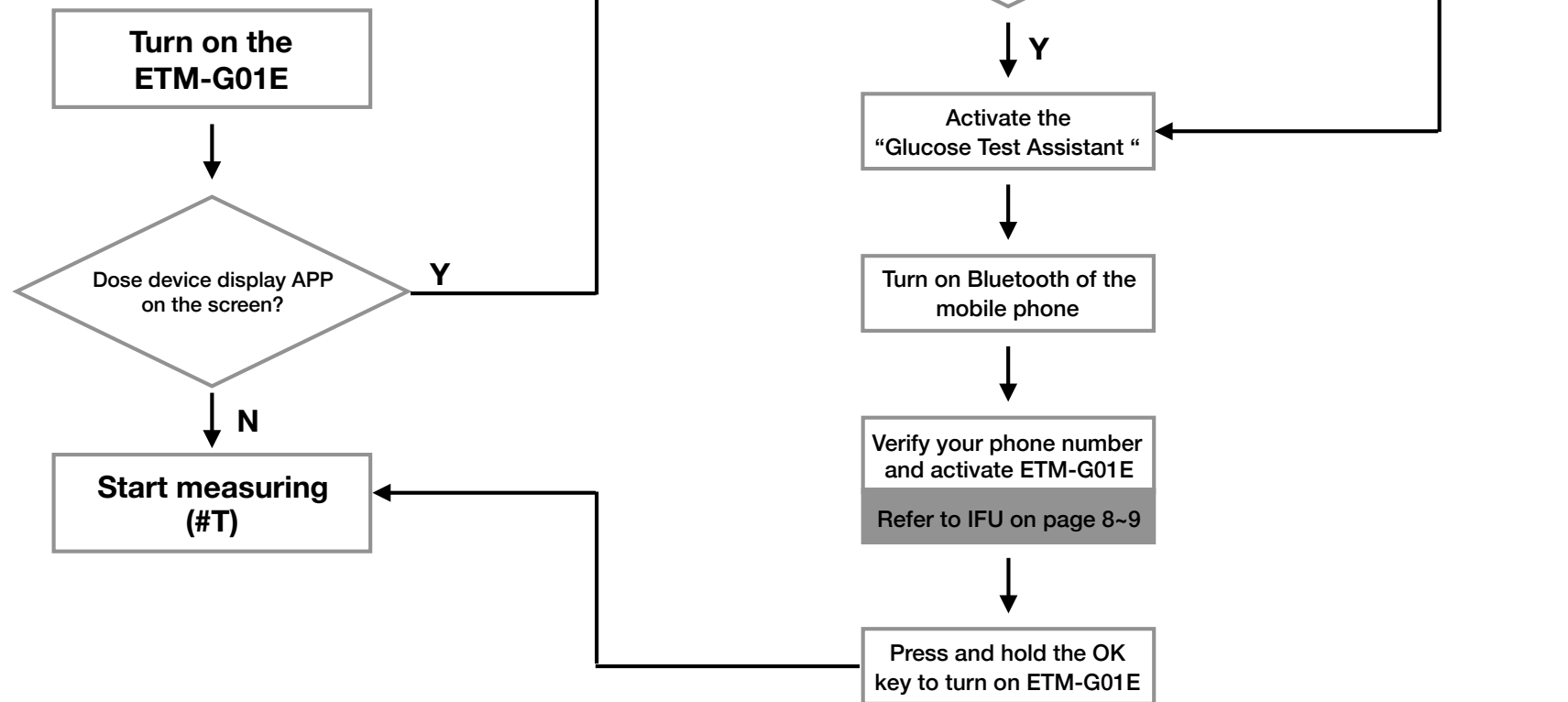
Mode: Normal; pre-diabetes; or type2 diabetes

Body Status:

Fasting Blood Glucose (**FBG**); Postprandial Blood Glucose (**PBG**)

FBG: measures blood glucose after an overnight and minimum 8 hours fast (not eating)

PBG: measures blood glucose exactly 2 hours after you start eating a meal



The link to the tutorial video is as follows (Apple users)

<https://www.youtube.com/watch?v=OUWWzwQoJ4M>

The link to the tutorial video is as follows (Android users)

<https://www.youtube.com/watch?v=jBLPdu7mqZI>

Start measuring (#T)

Select the type of diabetes

The link to the tutorial video for the calibration is as follows (#C)
<https://www.youtube.com/watch?v=fMVj6q4i87s>

Normal
(FBG : 80~100)

Pre-Diabetes
(FBG : $\geq 101 \sim 125$)

Type 2 Diabetes
(FBG : ≥ 126)

FBG ?
PBG ?

FBG ?
PBG ?

FBG ?
PBG ?

Fasting blood glucose

Postprandial blood glucose

Fasting blood glucose

Postprandial blood glucose

Fasting blood glucose

Postprandial blood glucose

Place fingers to test

Place fingers to test

Place fingers to test

Place fingers to test

Select "n-d"

Has medications been taken ?

Has medications been taken ?

Select "y-d"

Place fingers to test

Error rate $\geq 15\%$

Error rate $\geq 15\%$

Error rate $\geq 15\%$

Error rate $\geq 15\%$

Error rate $\geq 15\%$

Using the calibration function (#C)
Refer to IFU on page 16~22

Using the calibration function (#C)
Refer to IFU on page 16~22

Using the calibration function (#C)
Refer to IFU on page 16~22

Back to # T

Back to # T

Press the AS key to record readings
Refer to IFU on page 13~16

Press the AS key to record readings
Refer to IFU on page 13~16

Press the AS key to record readings
Refer to IFU on page 13~16

Keep observation and measurement

Back to # T

N

N

N

N

N

N

N

N

Y

Y

Y

Y

Y

Y